

Instructions

Add the finishing touches. Creating a clever place card holder to coordinate with the pumpkin patchwork napkin is as simple as placing a miniature pumpkin in a candy corn-filled ramekin. Copper wire, curled by wrapping it around a wooden spoon handle, holds the card.

Fabrics & Supplies

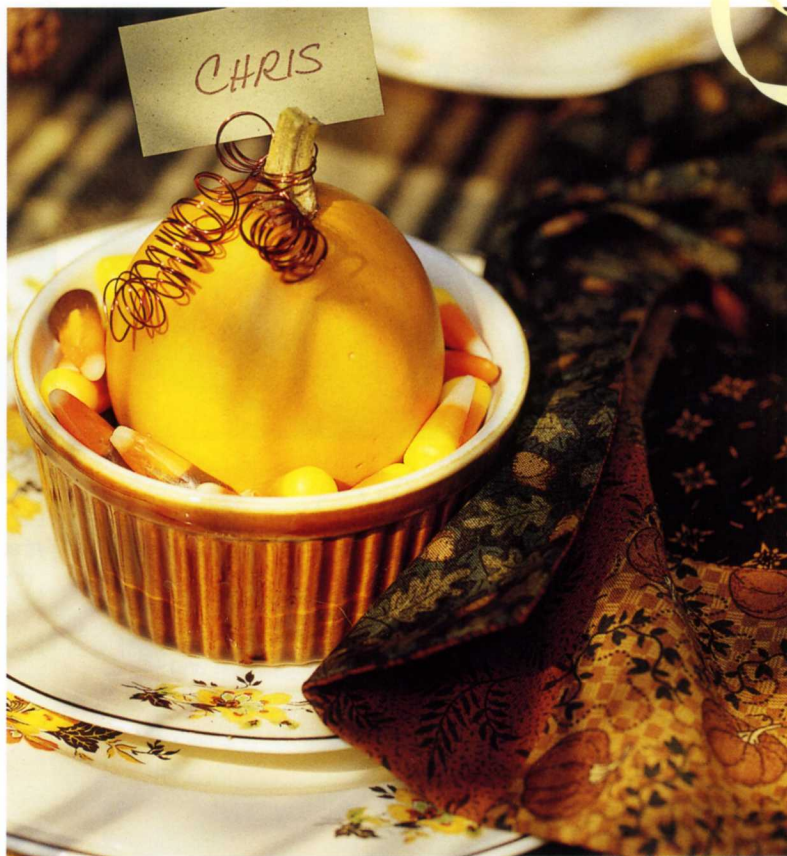
Finished Size: 16-inches square

Makes 4 napkins

Yardage is based on 42-inch wide fabric

16, 6 x 20-inch pieces of ASSORTED DARK PRINTS for napkin tops

1 yard GREEN PRINT for napkin backs



Pumpkin Patchwork Napkins

Cutting

From ASSORTED DARK PRINTS:

- Cut 64, 4-1/2-inch squares

From GREEN PRINT:

- Cut 4, 16-1/2-inch squares

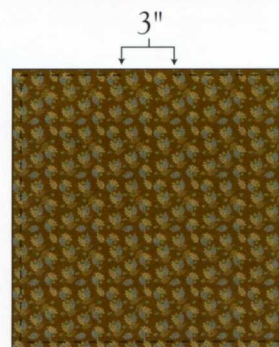
Piecing

Step 1 To make one napkin, use 16 of the 4-1/2-inch Dark Print squares. Sew the squares together in 4 rows of 4 squares each. Press the seam allowances in alternating directions by rows so the seams will fit snugly together with less bulk.

Step 2 Pin the rows at the block intersections, and sew the rows together. Press the seam allowances in one direction. At this point the napkin top should measure 16-1/2-inches square.



Step 3 With right sides together, layer the pieced napkin top and a 16-1/2-inch Green square. Sew the layers together 1/4-inch from the raw edges, leaving a 3-inch opening on one side for turning.



Step 4 Clip the corner seam allowances, turn the napkin right side out and press, taking care to see that the edges are sharp and even. Hand-stitch the opening closed.

Step 5 Machine-stitch in the ditch along the seam lines of the pieced napkin top.

Step 6 Repeat Steps 1 through 5 to make a total of 4 pieced napkins.